



6 the lodge St. Judes Close, Egham, TW20 0DN

£300,000

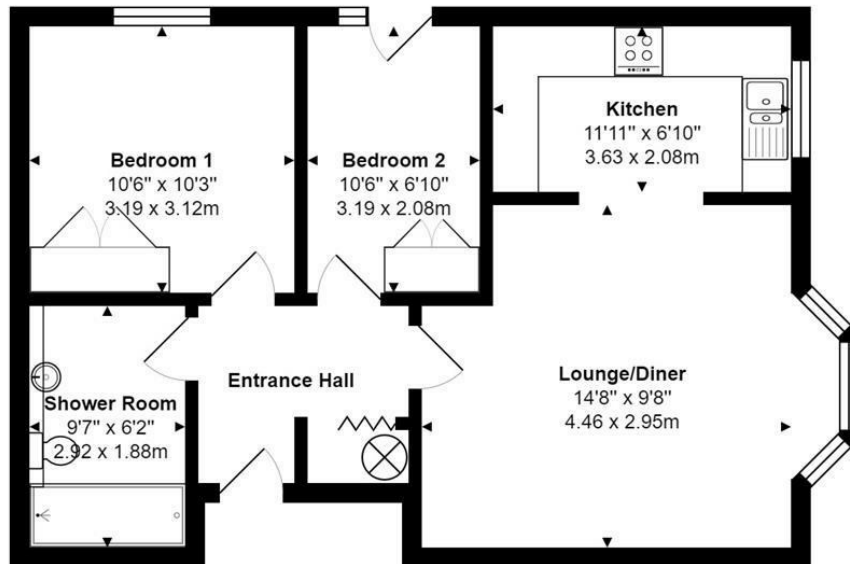
6 the lodge St. Judes Close, Egham, TW20 0DN

A ground floor apartment situated at the rear of this highly attractive, well-maintained Grade II listed gated development, with beautifully landscaped and manicured communal gardens. The property would be ideal for those who crave peace and quiet, as it is exclusively for those who are at least 55 or over and there is allocated and visitors' parking. This particular property has a gorgeous view of the communal gardens from the re-fitted modern kitchen and lounge with direct access to the garden from the 2nd bedroom. The accommodation comprises: entrance hall, lounge/diner with bay window, good size kitchen with fitted appliances, one double and one single bedroom – both with wardrobes and a good sized newly refurbished stunning shower/wet room. The property is situated within a few hundred yards of the Health Centre, Village Green and main Village shops. No Chain.



Floor Plan

6 The Lodge, St Judes Close, Englefield Green



Total Area: 610 ft² ... 56.7 m²

All measurements are approximate and for display purposes only



Features

- 2 Bedrooms
- Stunning Shower Room
- Newly Fitted Kitchen
- Own Entrance
- Gorgeous Gardens
- NO CHAIN

